

Gary C Worrell

From: Gary C Worrell [gcw@igx.net]
Sent: 12 February, 2008 19:05
To: gcw@igx.net
Subject: Postcard
Attachments: Hello.jpg; LewisburgMontandonRailroadBridge.jpg; DogWash.jpg; T378Winter.jpg; SandysPetStore01.jpg

Hello (see picture).

On the road again, this time I'm driving.

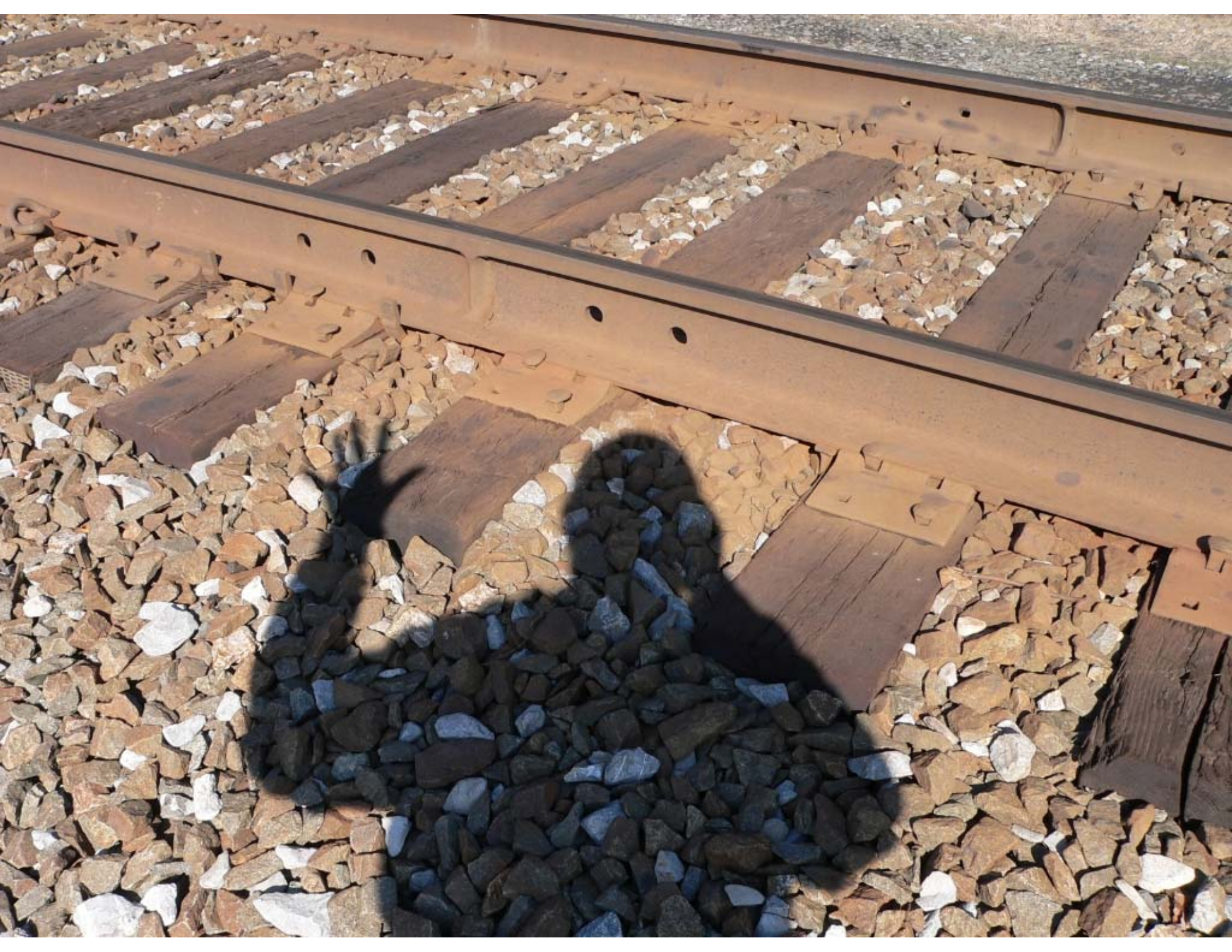
On my way I spotted an abandoned railroad bridge, crossing the West Branch of the Susquehanna River, between Lewisburg and Montandon Pennsylvania. It was constructed around 1870, and was part of the Lewisburg, Centre and Spruce Creek Railroad, which became the Lewisburg & Tyrone Railroad in 1880, then the Lewisburg & Tyrone Railway, a subsidiary of the Pennsylvania Railroad in 1913. It sports a box frame construction that was popular in its day. It became redundant in 1988, and is now overgrown and rotting. In order to get the picture, I had to step lightly on the remains of the railroad ties to avoid a potentially embarrassing situation (like falling through). The riverbanks around the bridge were slightly flooded and frozen (it was 17 degrees Fahrenheit according to TacomaTEMP).

There must be a lot of people who walk their dogs in the marshy area around the river, because right across the river road on the Montandon side was a place to get the mud off your dog.

Then I decided to stop at my favorite photo spot in the area, Township Road 378 (see postcards dated 26 MARCH & 20 AUGUST 2007) to get another seasonal view. I was traveling in the opposite direction on T378 this time, and I stopped along the road going uphill to get the shot. It took some time and a locking rear-wheel differential to get the Tacoma moving uphill again.

From there I drove on up to Wysox Pennsylvania, to check out a new pet store on Wysox's Golden Mile. It's owned by my brother (in the picture) & sister-in-law. So if you are ever in the area, stop by and tell them you saw it on a postcard. It probably won't get you any special deals, but I suspect they can tell you some stories about me that I'd rather you didn't hear.

Cheers,
G.

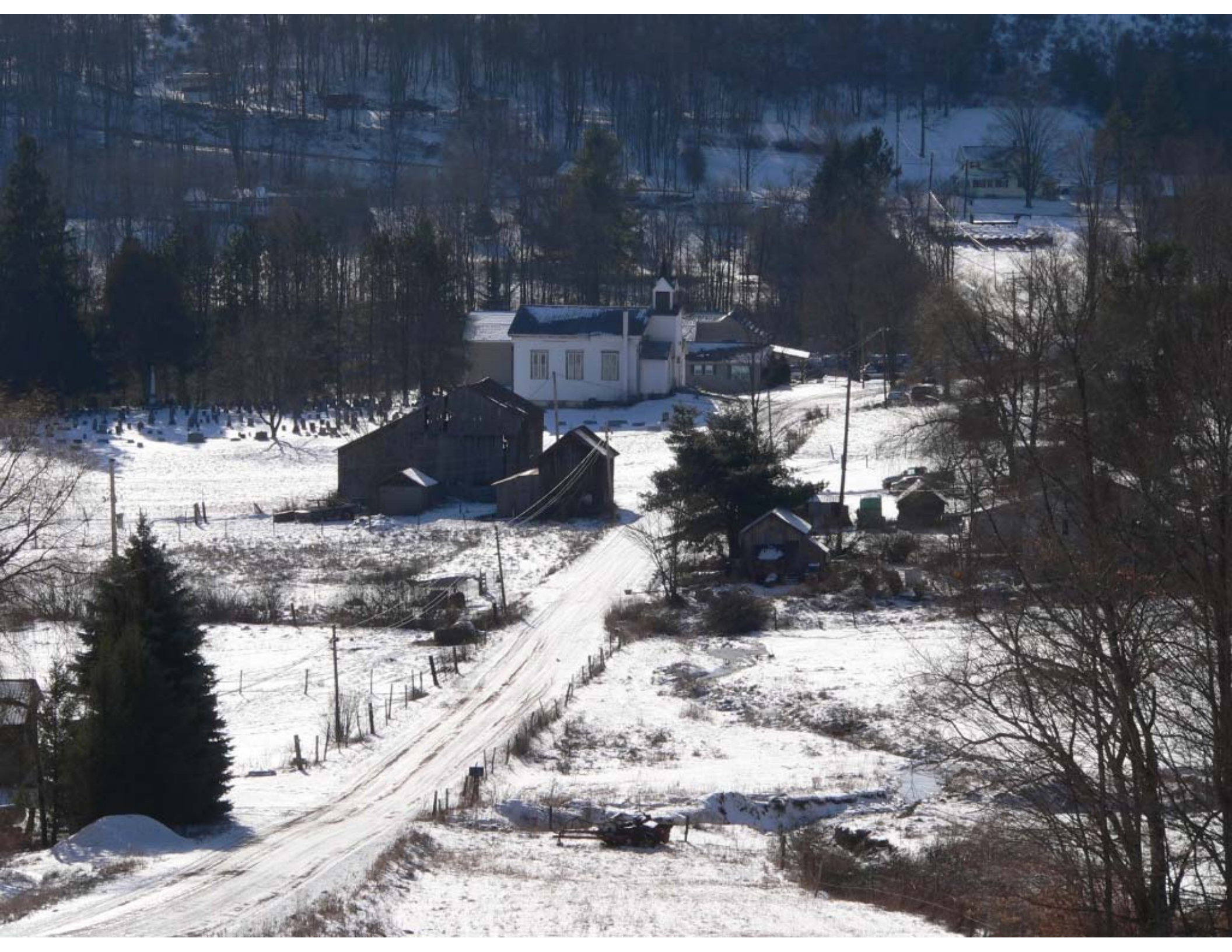




Dog Wash

SIDE
ENTRANCE

OPEN





SANDY'S
PETS · SUPPLIES · GROOMING
570-265-2003

OPEN

Supplies ARE HERE
Whiskers
Evolution
Beds -
Arrivals
RATS

DODGE

4x4

YTS-1482

TACOMA